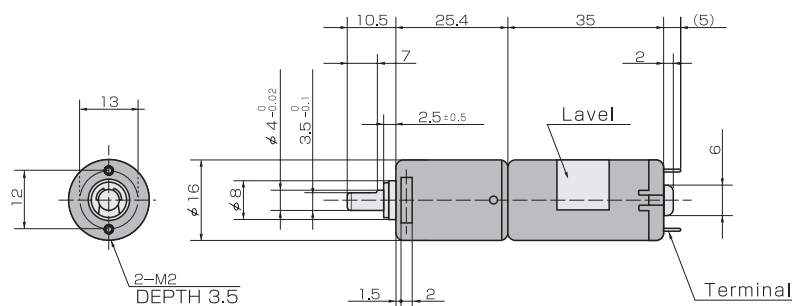


## TGU16-L

(DC Motor with Brushes)



### Dimensions



### Applications

Game machines, Automatic Teller machines (ATM), Door locks, Convey equipment, automatic and electrical curtains, Duplicators, and Robotics.

### Standard specifications for Gearhead

Reduction ratio	Gear stages	Allowable Torque		Moment maximum load		Allowable radial load	Allowable axial load
		mN·m	kgf·cm	mN·m	kgf·cm		
15~26	2	49	0.5	73.5	0.75	4.9	4.9
59~133	3	98	1.0	147.0	1.5	4.9	4.9

### Characteristic for Geared Motor

Part No				TGU16—24L (24V type)						TGU16—12L (12V type)					
Reduction ratio	Gear stages	Direction	Weight	No-load		Rating				No-load		Rating			
				Rev.	Current	Torque		Rev.	Current	Rev.	Current	Torque		Rev.	Current
				r/min	mA	mN·m	kgf·cm	r/min	mA	r/min	mA	mN·m	kgf·cm	r/min	mA
15	2	CCW	51	828	55	9.8	0.1	759	102	622	65	9.8	0.1	560	136
20				633	55	9.8	0.1	593	91	476	65	9.8	0.1	439	119
26				484	55	19.6	0.2	437	110	364	65	19.6	0.2	321	148
59	3		52	212	55	49	0.5	187	122	160	65	49	0.5	137	166
78				162	55	58.8	0.6	145	117	122	65	58.8	0.6	106	158
101				124	55	78.4	0.8	110	118	93.3	65	78.4	0.8	80.8	160
133		94.9		55	98	1.0	84.8	115	71.4	65	98	1.0	62.2	155	

### Standard specifications for motor

Type No.	Voltage	No-load		Rating				Starting		Weight	Brush	Noise element		
		Rev.	Current	Output	Torque		Rev.	Current	Torque				Current	
		r/min	mA	W	mN·m	gf·cm	r/min	mA	mN·m				gf·cm	mA
TP-1635B-24	DC24	13,300	35	1.4	1.18	12	11,600	110	9.20	93.9	621.8	27	Carbon	Varistor
TP-1635C-12	DC12	10,000	40	1.28	1.18	12	8,500	150	7.84	80.0	773.3	27	Carbon	Varistor

### TOK BEARING CO.,LTD.

HEAD OFFICE, TOKYO, JAPAN – TEL : 81-3-3969-1534 FAX : 81-3-3969-9354  
EMAIL : overseas@tok-bearing.co.jp

Product specification are subject to change without prior notice.

**Before assembly or use of any bearing, please read "Caution for Use"**