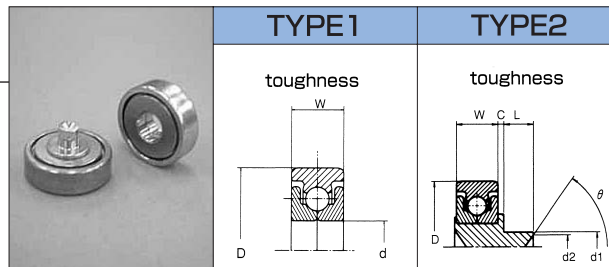


BEARINGS

DURABLE AND NON-DESTRUCTIVE BEARING (TOUGH)

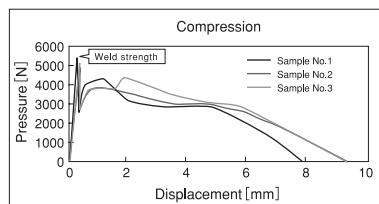
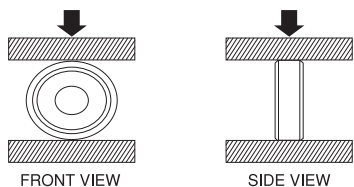
FEATURES: The "TAS" bearings are very durable and tough to destroy. New technology was used to increase its durable and shock resistance.



Code	Part No.	D _{-0.1} ⁰ [mm]	d ₀ ^{+0.1} [mm]	d1 _{-0.1} ⁰ [mm]	W _{-0.2} ⁰ [mm]	C ^{±0.4}	L ₀ ^{+0.3}	(d2 × θ)	Load* [N] (kgf)	TYPE
231502	TAS-22-H8	22	8	-	7	-	-	-	392 (40)	1
231501	TAS-22-AH1-5	22	-	5	7	1	5	φ3 × 100°	392 (40)	2

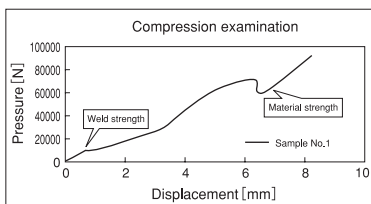
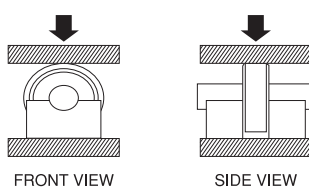
*Allowable load at 300rpm
Size limits can be modified for practical applications. Please contact our sales/engineering departments for further information and assistance.

1. Compression examination



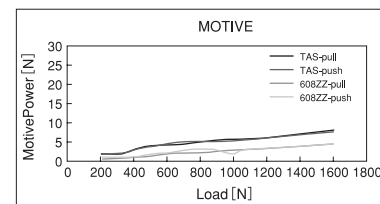
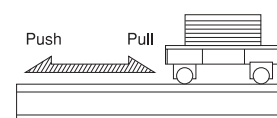
With a fixed outer wheel, the TAS bearing has a compression strength of about 1.5X the JIS bearing 608ZZ

2. Compression examination



When an inside fix is used, the TAS bearing has a compression strength of approximately 23X the JIS bearing 608ZZ

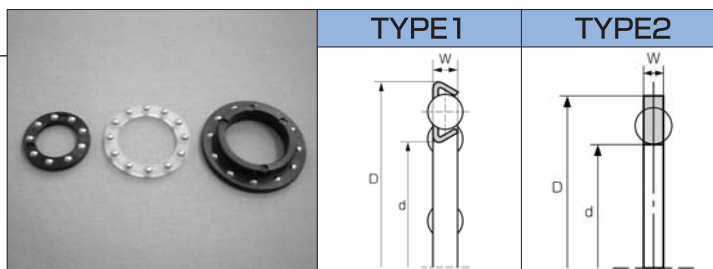
3. Motive power examination



In Motive power, the TAS bearing is equal to the JIS bearing 608ZZ

THRUST RETAINER

FEATURES : 1. This is simple Thrust bearing with a press-fit ball in the retainer.
2. Axial load can be applied in one direction.



Code	Part No.	D	d	W	Retainer material	Balls material	Balls	TYPE
800002	T-22 Thrust Retainer	21.4 ^{±0.2}	13 ^{±0.1}	2 ^{±0.1}	SUS304	SUJ-2	1/8" × 12	1
280300	T-22.7 Nylon Thrust Retainer	22.7 ^{±0.1}	16 ^{±0.1}	1.4 ^{±0.1}	PA66	SUJ-2	3/32" × 12	2

*Size limits can be modified for practical applications. Please contact our sales/engineering departments for further information and assistance.
These bearings are made to order.

TOK BEARING CO.,LTD.

HEAD OFFICE, TOKYO, JAPAN – TEL : 81-3-3969-1534 FAX : 81-3-3969-9354
EMAIL : overseas@tok-bearing.co.jp

Product specification are subject to change without prior notice.

Before assembly or use of any bearing, please read "Caution for Use"