

SLIDING DOOR WHEELS

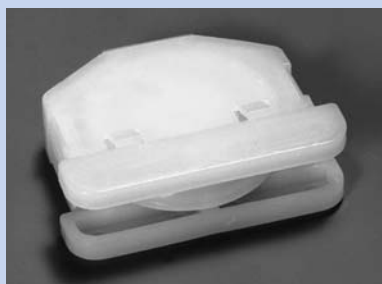
UNIVERSAL TYPE-SLIDING DOOR WHEELS

APPLICATIONS: All types of sliding doors

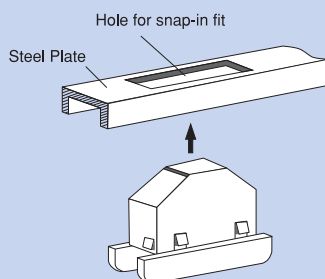
FEATURES: 1. Clamps are not required in the assembly of the doors
2. Simple construction, high durability, and low cost
3. Free from corrosion, 100% plastic material

DURABILITY: The door wheels were tested under the following conditions:
• Forward and Reverse Force of 49N(kgf)
• Stroke of 500mm for 100,000 cycles
The result : the door wheels and door should still smoothly.

Code	Part NO.	Frame material	Kind of roller
260001	TOK DOOR WHEEL No.3 A	Polyethylene (PE)	Roller (PA : Polyamide)
260005	TOK DOOR WHEEL No.3 B	Polyethylene (PE)	Bearing (DU-30-H6-M)

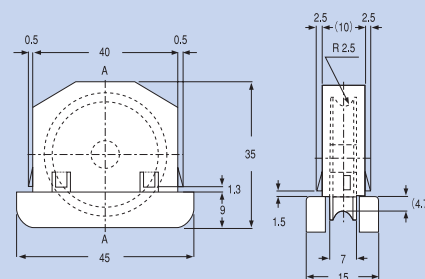


Sizes of Hole for snap-in fit
 $L \times W \times t = 40.5 \times 11 \times 1.0$ (or 0.8) mm

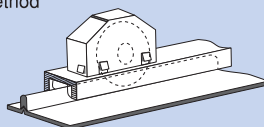


TOK DOOR WHEEL No.3 A (Roller type)

Dimension



Fitting method



TOK DOOR WHEEL No.3 B (Bearing type)

TOK BEARING CO.,LTD.

HEAD OFFICE, TOKYO, JAPAN – TEL : 81-3-3969-1534 FAX : 81-3-3969-9354
EMAIL : overseas@tok-bearing.co.jp

Product specification are subject to change without prior notice.

Before assembly or use of any bearing, please read "Caution for Use"