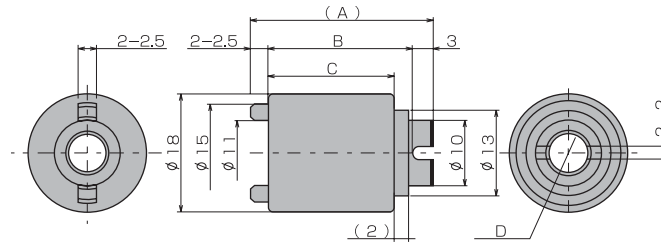
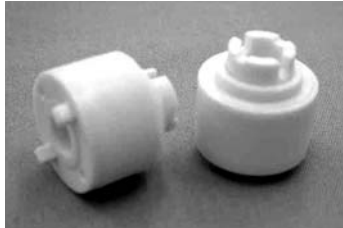


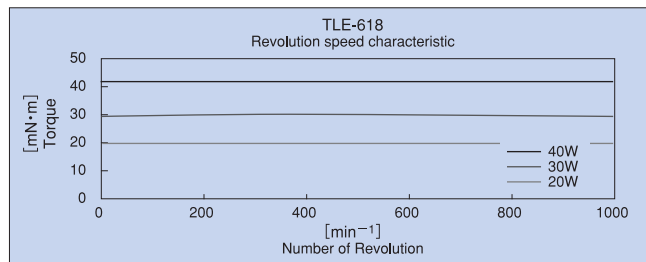
TLE SERIES

The TLE SERIES TORQUE LIMITERS generates Hysteresis torque between a permanent magnet and a semi-rigid magnetic substance. If speed dependency or temperature dependency play factor in your choice, the TLE SERIES TORQUE LIMITERS out performs a spring type limiters. In applications of non contact with a permanent magnet or magnetic substance the TLE SERIES TORQUE LIMITERS are an excellent choice for durability compared to slide resistance systems (spring type limiters) and multi-plate type of limiters.

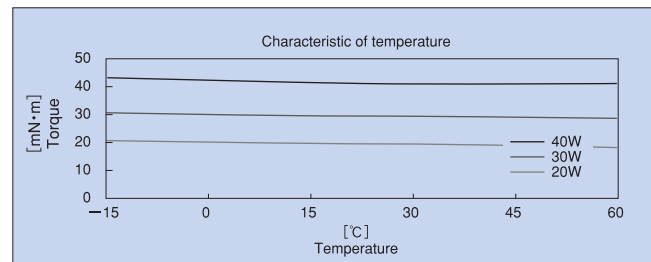


- FEATURES
- 1.Fluctuations of torque due to rotational speed changes are reduced.
 - 2.Fluctuations of torque due to temperature and humidity changes are reduced.
 - 3.Fluctuations of torque in CW and CCW are reduced.
 - 4.Minimum torque differential between starting torque and dynamic torque.

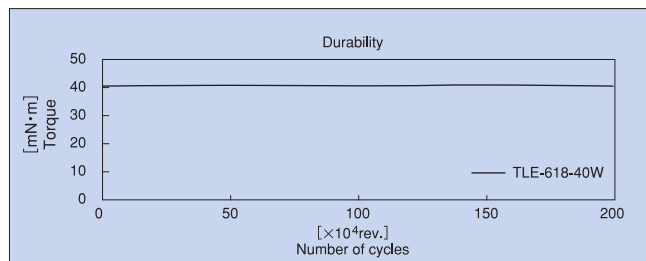
Code	Part No.	Application shaft [mm]	(500min ⁻¹) Torque [mN·m] (gf·cm)	Rotating Direction	Basic dimensions [mm]			
					A	B	C	D
540001	TLE1-618-20W	φ 6	20 (204)	CW · CCW	19.5	14	11.5	φ 6
540002	TLE2-618-30W	φ 6	30 (306)	CW · CCW	22.5	17	14.5	φ 6
540003	TLE3-618-40W	φ 6	40 (408)	CW · CCW	26	20.5	18	φ 6



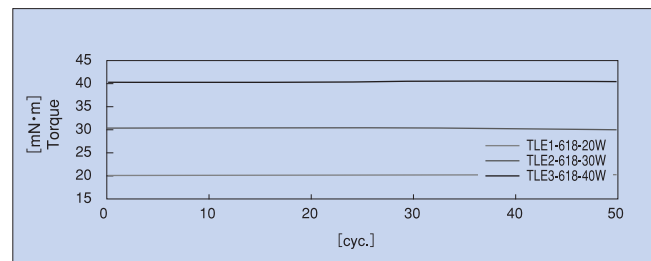
Rotational speed changes causes almost zero torque fluctuations. Due to slide resistance of the resin parts, there will be some noticeable speed dependencies. Larger torque relates to larger speed dependencies



Temperature changes causes almost zero torque fluctuations. You will see a slight torque reduction due to lower temperatures effecting the magnetic components, recovery will occur at room temperature.



At low rotational speeds, there is very little wear on the TLE SERIES TORQUE LIMITERS. As conditions dictate and wear increases, the permanent magnet and the semi-rigid magnetic surface will come in contact, reducing the durability of the limiter.



Annealing the resin parts increases the longevity of the parts.

TOK BEARING CO.,LTD.

HEAD OFFICE, TOKYO, JAPAN – TEL : 81-3-3969-1534 FAX : 81-3-3969-9354
EMAIL : overseas@tok-bearing.co.jp

Product specification are subject to change without prior notice.

Before assembly or use of any bearing, please read "Caution for Use"